

# FISHWAY STATUS REPORT

**Date:** 1/4/2014  
**Inspection Period:** 12/29/13 thru 01/4/14

All JD Fishways are inspected once per day during winter season;  
 frequent monitoring of the PLC displays in SMF Fisheries Office as necessary.

	<b>JOHN DAY DAM</b>	
	JD/WC Project-Fisheries P.O. Box 823 Rufus, Oregon 97050 Phone: 541-506-7860	

<b>John Day Dam</b>	<b>Inspections</b>	<b>Criteria</b>	<b>Total Number of Inspections:</b> 6	<b>Temperature:</b> 40.3 F
	<b>Out of Criteria</b>	<b>Limit</b>		<b>Secchi:</b> 5.8 Ft.
<b>NORTH FISHWAY</b>			Returned to service after annual maintenance on 12/19/2013; meeting all FPP criteria	
Exit differential	0	≤ 0.5'		
Exit Control weirs	0	High setting	High setting is normal for JDN	
Count station differential	0	≤ 0.3'		
Weir crest depth	0	1.0' ± 0.1'		
Entrance differential	0	1.0' - 2.0'	AVG 1.5	
<b>SOUTH FISHWAY</b>			AWS pumps OOS on 01/04/14 PM in preparation for dewatering on 1/07/14	
Exit differential	0	≤ 0.5'		
Exit Control weirs	0	MID setting	MID is normal for JDS	
Count station differential	0	≤ 0.3'		
Weir crest depth	0	1.0' ± 0.1'		
South entrance differential	0	1.0' - 2.0'	AVG 1.4	
Entrance weir SE1	0	depth (≥ 8')	AVG 8.7	
Collection channel velocity	0	1.5 - 4 fps	AVG 3.12	
Bay 1 differential	0	1.0' - 2.0'	AVG 1.7	
N. Entrance PH(Bay 19)differential	0	1.0' - 2.0'	AVG 1.2	
Entrance weir NE1	0	depth (≥ 8')	AVG 8.6	
Entrance weir NE2	0	depth (≥ 8')	AVG 8.6	
<b>JUVENILE PASSAGE</b>			OOS for winter maintenance since 12/20. RTS in late March 2014	
Forebay/bypass conduit differential	N/A	4.0' - 5.0'		
Submersible traveling screens	N/A	visual inspect		
Turbine trashrack drawdown	N/A	<1.5', wkly		
Vert barrier screen drawdown	N/A	<1.5', wkly		
Spill volume	N/A	n/a		
Spill pattern	N/A	n/a		
Turbine Unit Priority	N/A	per FPP		
Turbine 1% Efficiency	N/A	per FPP		

**SMOLT MONITORING FACILITY**

**Operation:** SMF OOS since 12/17/13. RTS mid March 2014

**Debris:** N/A

**Maintenance:**

SMF fully winterized, annual maintenance underway.

SMF CCTV replacement underway.

**Research:** None

**Fallbacks:** AVG: 0 MAX: 0 MIN: 0

**OTHER ISSUES:****JOHN DAY**

**Birds:** See Avian tabs.

122 avian lines are properly installed. Four lines are currently missing; spillway/TSW line broke on 4/12/13. JD Management preparing a plan for the missing lines' replacement before 2014 passage season.

**Operations:**

JD North Fishway returned to regular service on 12/19 and it has been meeting the optimal FPP criteria since.

JD South Fishway OOS since 1/04/14. Dewatering scheduled for 1/07/14.

All STSs were removed from MU gatewells for winter maintenance by 19 December. JBS started 1/3 open orifices rotation schedule on 12/20.

JBS collection channel is scheduled for dewatering/ inspection in 4 February 2014.

**Maintenance:**

Calibration: 12/18/2013 All JD Fishways' PLCs/ water level sensors were within 0.3' margin of error.

**Research:**

Fish counting at both JD Fishways ended 10/31 . Video counting began 11/1 and will continue through the winter.

Adult Salmonids Radio telemetry evaluations are ongoing at both JD adult fishway. University of Idaho crew is in charge of detecting of all adult adult salmonids, which were first tagged at Bonneville Dam.

Glen A. Smith PE

OPM John Day/Willow Creek Project

Date: \_\_\_ 27-Jan-13

### 2007-2013 Water Temps JDA w/ 12yr avg



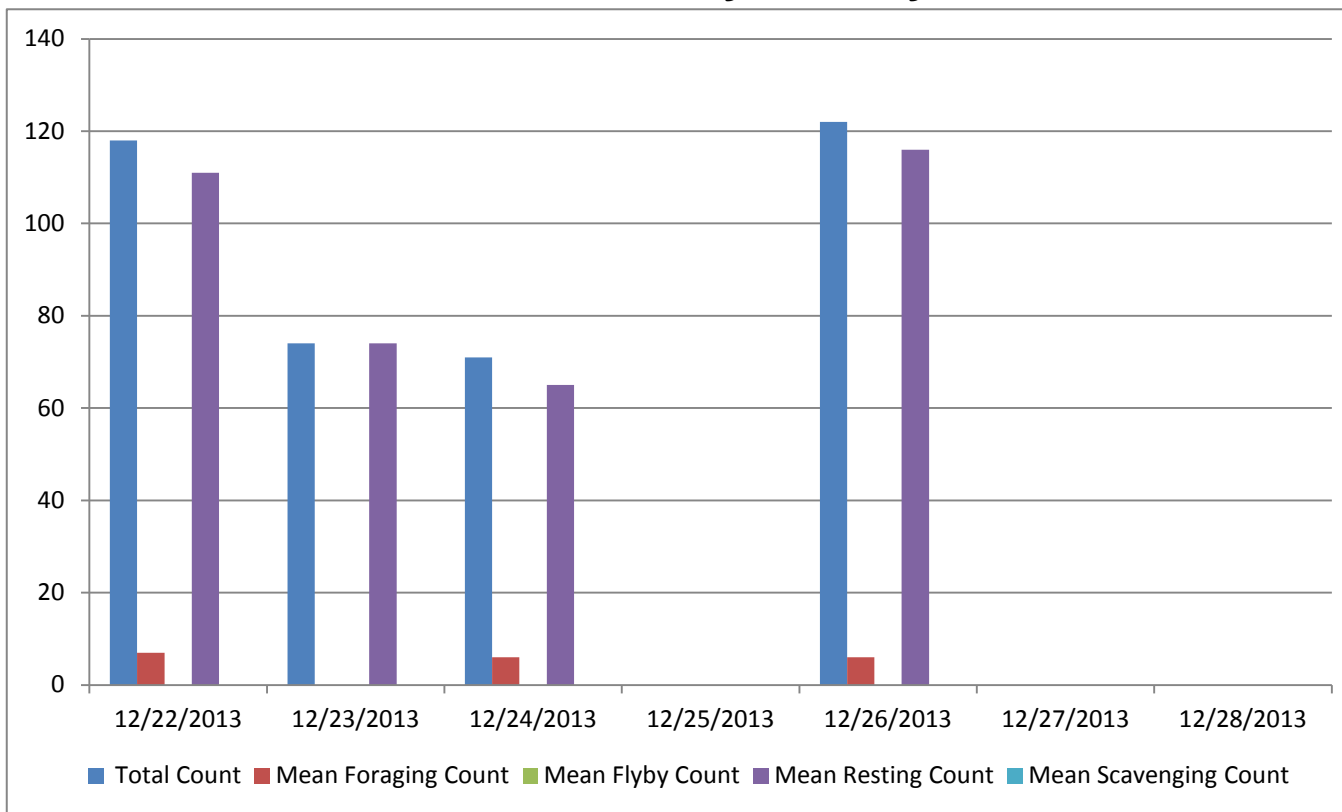
## JDA COLLECTION CHANNEL VELOCITY

Date 21-Dec-13  
By: pk

Bay(s)	Time	Sec.	Velocity (f/s)
0-2	0:01:23	83	2.17
2 - 4	0:02:20	140	3.16
4 - 6	0:03:16	196	3.21
6 - 8	0:04:14	254	3.10
8 - 10	0:05:10	310	3.21
10 - 12	0:06:10	370	3.00
12 - 14	0:07:17	437	2.69
14 - 16	0:08:13	493	3.21
16 - 18	0:08:55	535	4.29

**3.12**

## Bird Count by Activity



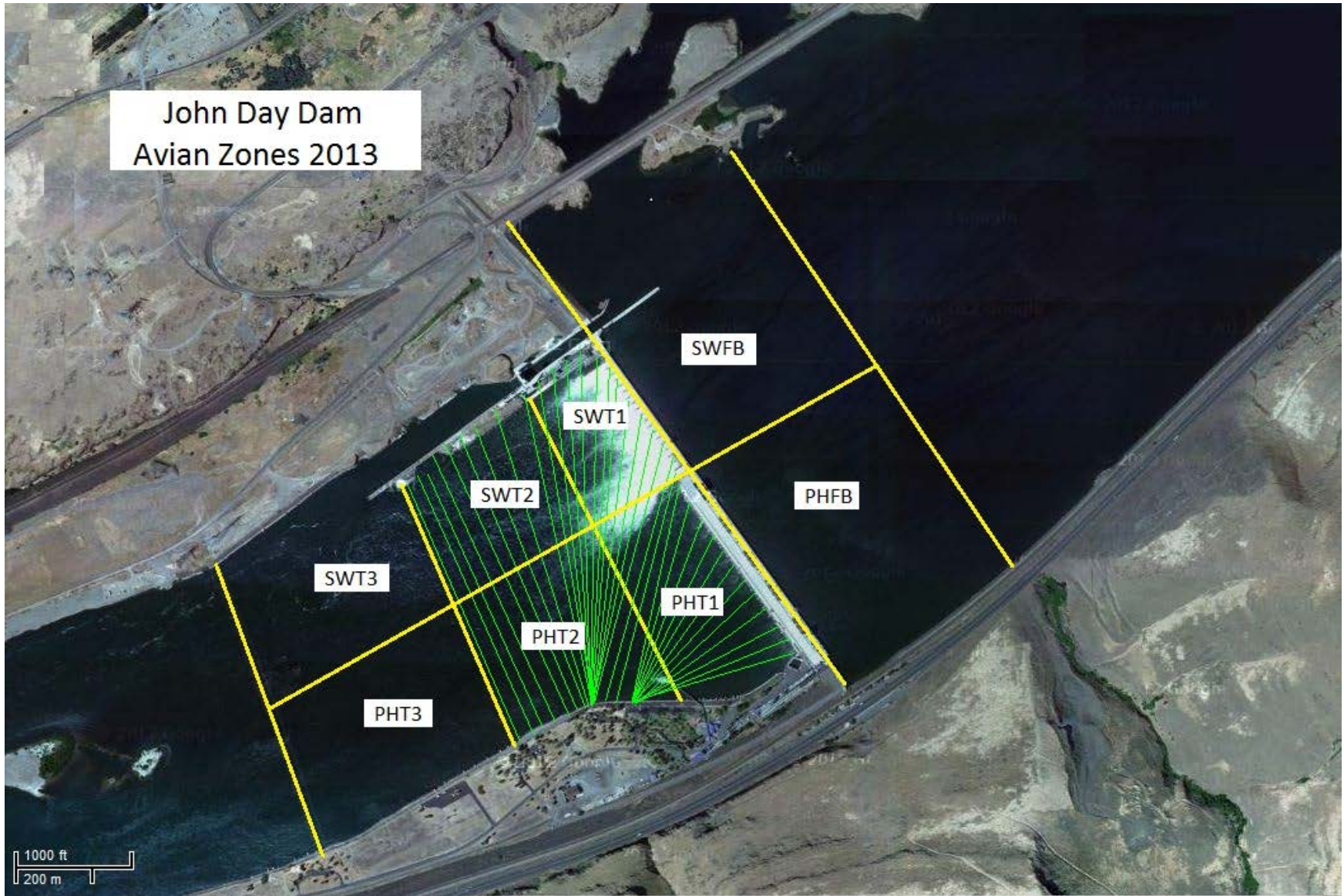
Date	Total Count	Mean Foraging Count	Mean Flyby Count	Mean Resting Count	Mean Scavenging Count
12/22/2013	118	7		111	
12/23/2013	74			74	
12/24/2013	71	6		65	
12/25/2013					
12/26/2013	122	6		116	
12/27/2013					
12/28/2013					

**Seasonal High numbers of GULLS  
in the Forebay and on the WING WALL.**

**Christmas**

**Heavy Fog**

John Day Dam  
Avian Zones 2013



**John Day:**

	Temp:	Secchi:	Fallbacks
Sun	40	6.0	
Mon	40	5.5	
Tues	40	5.5	
Wed			
Thur	40	6.0	
Fri	41	6.0	
Sat	41	6.0	
AVG:	40.3	5.8	AVG
			MAX
			MIN

	NE1	NE2	S.Ent	SE1	N.Ent	JBS Diff	Bay1	Bay19
Sun	8.5	8.5	1.5	8.5	1.5	4.6	1.8	1.2
Sun								
Mon	8.8	8.8	1.2	8.9	1.4	4.5	1.5	1.1
Mon								
Tues	8.6	8.6	1.4	8.6	1.4	4.5	1.7	1.2
Tues								
Wed								
Wed								
Thur	8.7	8.7	1.3	8.8	1.5	4.6	1.6	1.1
Thur								
Fri	8.8	8.8	1.3	8.8	1.4	4.5	1.7	1.1
Fri								
Sat	8.4	8.4	1.4	8.4	1.5	4.6	1.8	1.2
Sat								
AVG:	8.6	8.6	1.4	8.7	1.5	4.6	1.7	1.2

New Years